



K root anycast

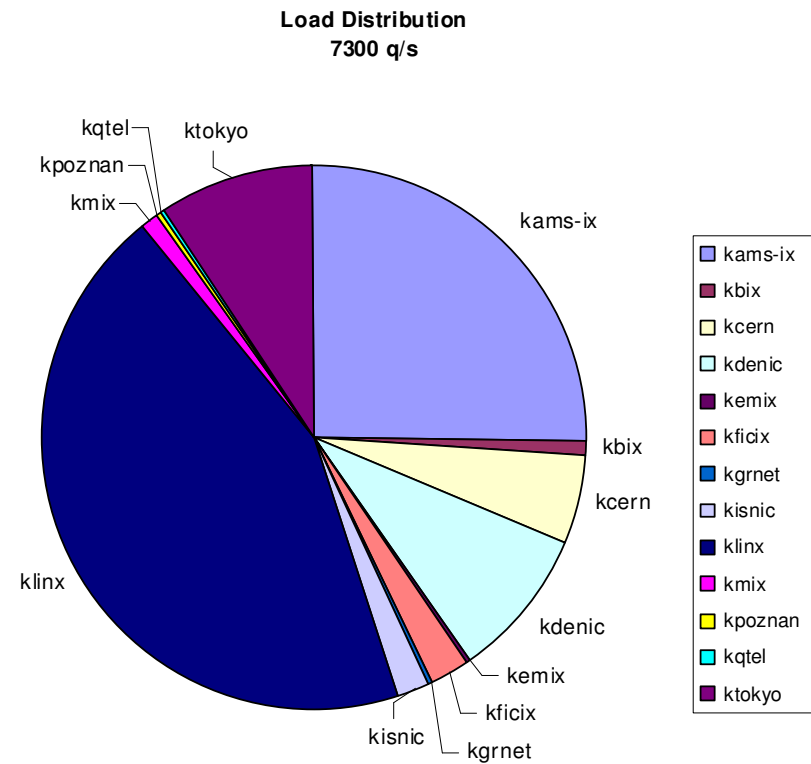
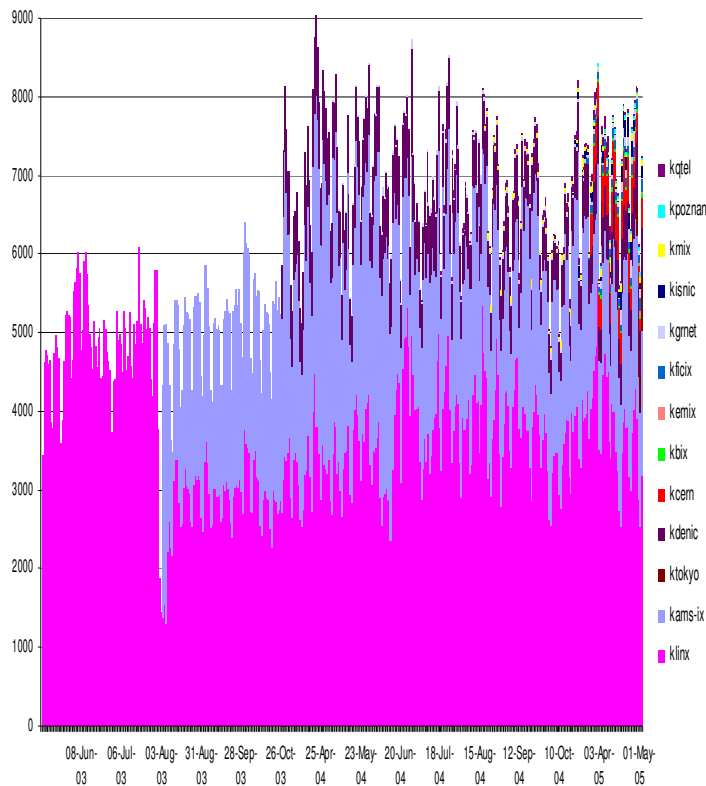
Status Update and Impact Studies

Andrei Robachevsky <andrei@ripe.net>
RIPE NCC



Current status

- 3+10 nodes are deployed





Future Plans

- Deploy 1-2 more global nodes in North America
- Consider the current phase of local node deployment completed
 - Do not deploy any new local nodes
- Study K-root anycasted service to better understand impact and develop future strategy



Impact Studies

- What is the effect of deploying K-root anycast nodes on the Internet?
- No comprehensive study exists
- Started to collect data
 - Response times
 - TCP Dumps of queries
 - Data collection infrastructure to monitor instances being added or going down
- Currently collecting data
- Full report at RIPE51



Questions, Discussion

